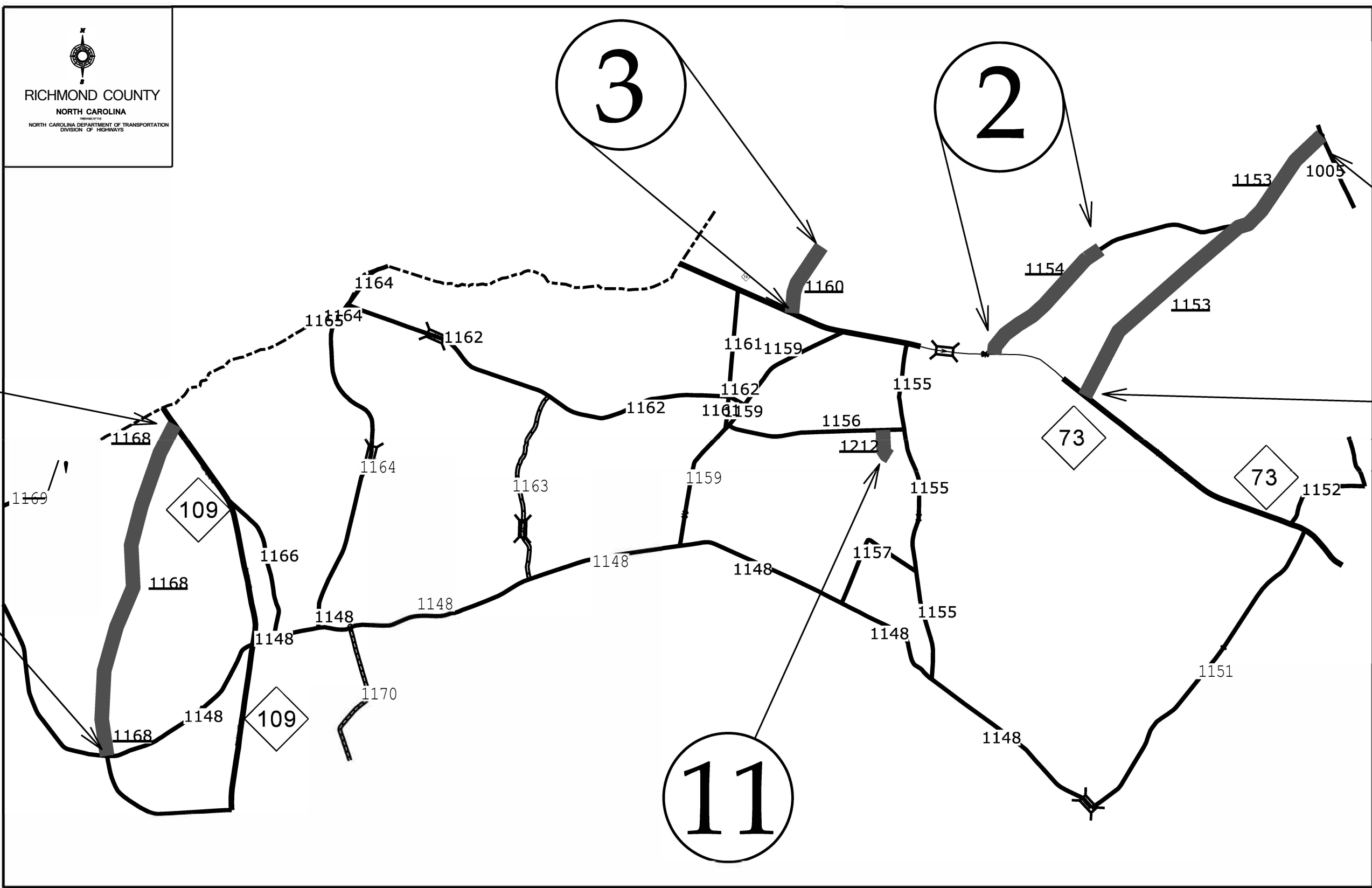


Maps 2-4, 11 & 13



13

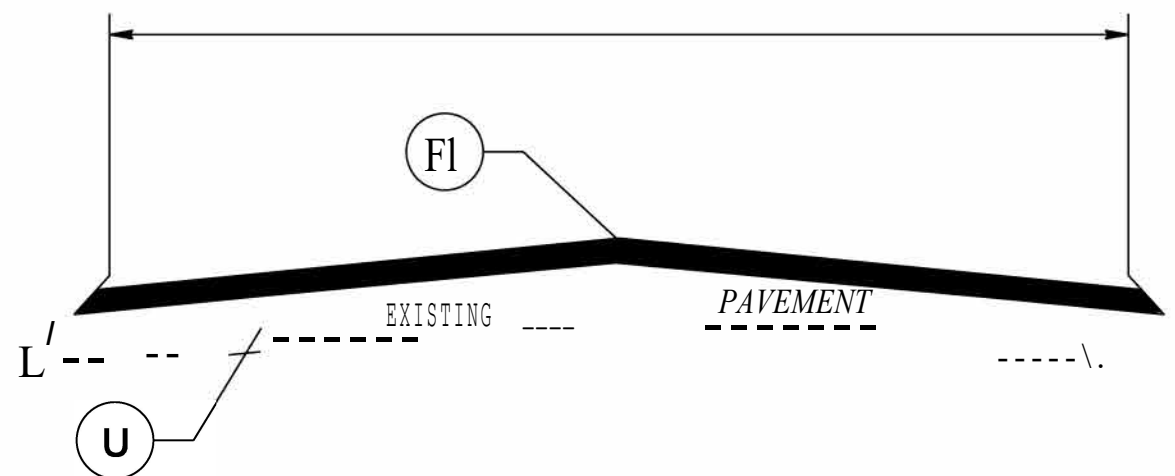
3

2

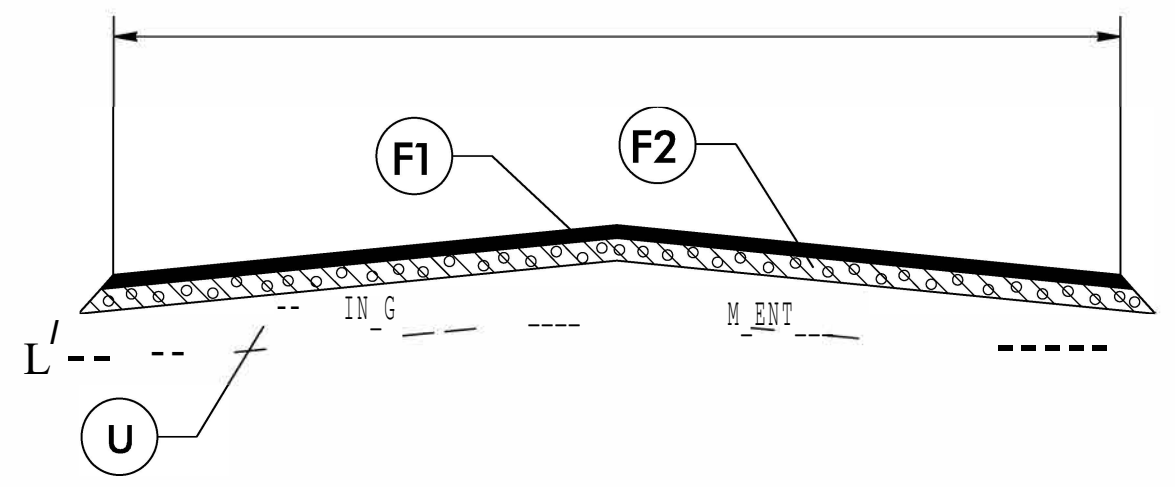
4

11

\$\$\$\$\$SYTIME\$\$\$\$\$
\$\$\$\$\$DATE\$\$\$\$\$
\$\$\$\$\$DRAWN AME\$\$\$\$\$



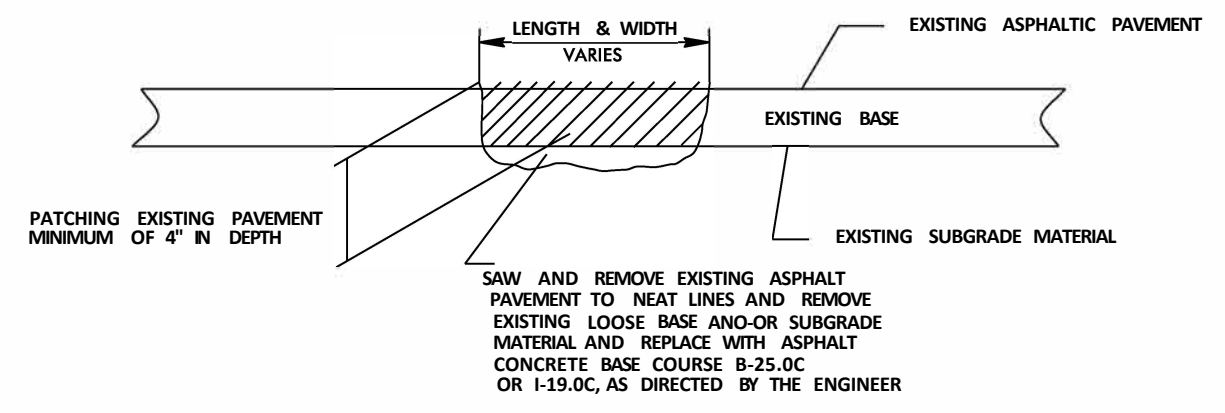
TYPICAL SECTION NO. 1
 MAPS 1-15



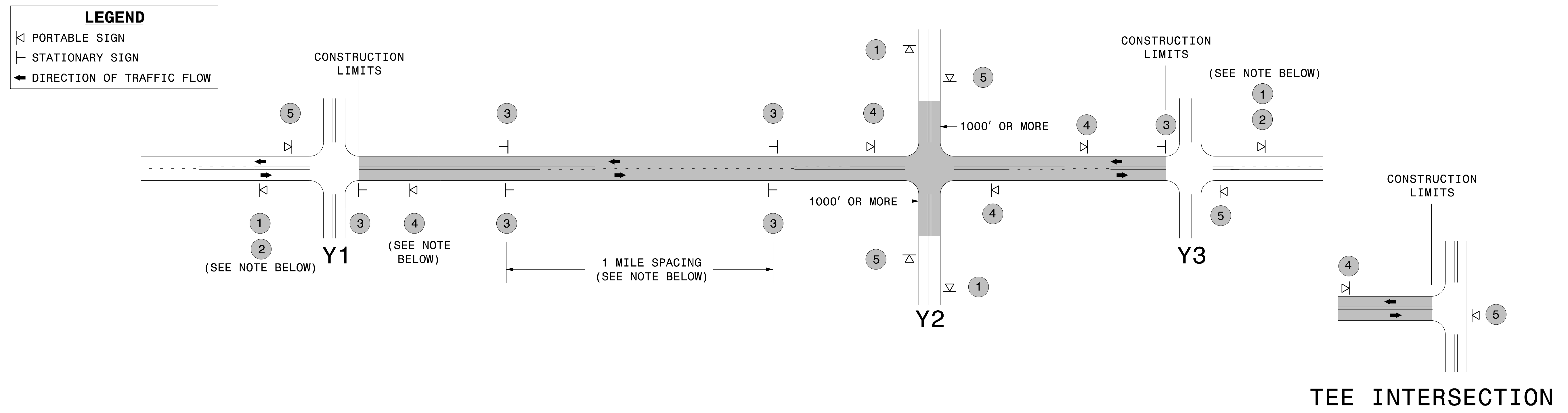
TYPICAL SECTION NO. 2
 MAPS 16-24

PAVEMENT SCHEDULE	
F1	PROP. ASPHALT SURFACE TREATMENT DOUBLE SEAL
F2	PROP. ASPHALT SURFACE TREATMENT FOG SEAL
U	EXISTING PAVEMENT

DETAILS OF PATCHING EXISTING PAVEMENT PRIOR TO RESURFACING



SIGNING FOR ASPHALT SURFACE TREATMENT



SIGNING NOTES AND PLACEMENT PER DIRECTION		<p>- PLACE 1000' PRIOR TO BEGINNING OF CONSTRUCTION LIMITS. ONLY USED ON -Y- LINES IF RESURFACING LIMITS EXTEND 1000' ALONG -Y- LINE.</p> <p>- SIGN #2 ONLY USED WHEN RESURFACING LIMITS ARE 2 OR MORE MILES IN LENGTH. ROUND UP TO THE NEAREST WHOLE NUMBER. DO NOT USE FRACTIONAL OR DECIMAL NUMBERS.</p>	<p>STATIONARY SIGNING NOT REQUIRED FOR THE FOLLOWING -Y- LINE CONDITIONS:</p> <ol style="list-style-type: none"> 1) LESS THAN 1000' OF RESURFACING ALONG -Y- LINE 2) SUBDIVISION ROADS 3) DEAD END ROADS <p>WHEN PAVING/CONSTRUCTION ACTIVITIES PROCEED ACROSS AN UNSIGNED -Y- LINE, PORTABLE ADVANCE WARNING SIGNS SHALL BE USED ALONG THE -Y- LINE AS SHOWN BELOW. REMOVE UPON COMPLETION OF WORK.</p> <div style="display: flex; justify-content: space-around; align-items: center;"> <div style="text-align: center;"> <p>PLACED 500' IN ADVANCE OF FLAGGER.</p> </div> <div style="text-align: center;"> <p>PLACED 250' IN ADVANCE OF FLAGGER.</p> </div> </div>
		<p>- ALTERNATE THE FOLLOWING TWO SIGNS:</p> <p>- STARTING WITH "LOOSE GRAVEL" (W8-7) FOLLOWED BY "UNMARKED PAVEMENT".</p> <p>- PLACE INITIALLY AT THE CONSTRUCTION LIMITS AND SPACED 1 MILE APART THEREAFTER.</p>	
		<p>- AT TEE INTERSECTIONS INSTALL INITIALLY 0.5 MILE FROM INTERSECTION AND SPACE 1 MILE APART THEREAFTER.</p> <p>- THESE ARE FOR -Y- LINES THAT ARE "THROUGH" ROADWAYS. DEAD END AND SUBDIVISION ROADS ARE NOT "THROUGH" ROADWAYS.</p> <p>- INSTALL 500' +/- FROM EACH -Y- LINE APPROACH AS SHOWN ABOVE.</p> <p>- FOR MULTIPLE -Y- LINES THAT ARE SEPARATED BY 0.25 MILES OR LESS, TREAT AS A SINGLE UNIT AND INSTALL WITHIN 500' OF EACH APPROACH.</p> <p>- A MAXIMUM OF 2 SIGN SETS PER MILE. DO NOT INSTALL WHEN -Y- LINES ARE WITHIN 0.5 MILES FROM "END ROAD WORK" SIGN.</p>	
		<p>- PLACE 500' FOLLOWING THE END OF CONSTRUCTION LIMITS OR AS SHOWN WHEN WORK ENDS AT A 3-WAY TEE INTERSECTION.</p>	
	<p>THE ABOVE SIGNS ARE ALL THAT ARE REQUIRED FOR A CONTRACTOR TO BEGIN A RESURFACING CONTRACT. ANY ADDITIONAL SIGNS REQUESTED BY NCDOT DIVISIONS SHALL BE INSTALLED WITHIN 7 BUSINESS DAYS OF THE START OF CONTRACT WORK.</p>		

MAPS LESS THAN 2 MILES

FOR AST RESURFACING MAPS WITH CONSTRUCTION LIMITS LESS THAN 2 MILES IN LENGTH, USE A STATIONARY "LOOSE GRAVEL" SIGN AT THE BEGINNING CONSTRUCTION LIMIT FOLLOWED BY AN "UNMARKED PAVEMENT" SIGN MIDWAY THROUGH AND AN "END ROAD WORK" SIGN AT THE END CONSTRUCTION LIMIT.

ADVANCE WARNING SIGNS FOR 2-LANE ROADWAY ASPHALT SURFACE TREATMENT

5/12/2017 S:\TMS\WZTC\Resurfacing\2L2W & AST Resurfacing Details\Resurfacing_AdvWarn_2Ln - AST.dgn User:kdais

PROJECT NO.	SHEET NO.	TOTAL NO.
2026CPT.08.03.20772	11	

SUMMARY OF QUANTITIES

PROJECT NO	COUNTY	MAP NO	ROUTE	DESCRIPTION	TYP NO	LANES	LANE TYPE	LENGTH	WIDTH	1575000000-E	1704000000-E	1803500000-E	1820000000-E	1838000000-E	1838500000-N
										ASPHALT BINDER FOR PLANT MIX	PATCHING EXISTING PAVEMENT	ASPHALT SURFACE TREATMENT, DOUBLE SEAL	ASPHALT SURFACE TREATMENT, FOG SEAL	EMULSION FOR ASPHALT SURFACE TREATMENT	VACUUM TRUCK
										MI	FT	TONS	TONS	SY	SY
2026CPT.08.03.20772	Richmond	1	SR-1615 / MAIN ST	FROM BIRDGES STREET TO NC HWY 38	1	2	2WU	0.39	25-30	1	22	5,928.00		3,260	
TOTAL FOR MAP NO. 1									0.39		1	22	5,928.00		3,260
2026CPT.08.03.20772	Richmond	2	SR-1154 / JOHN USSERY RD	FROM NC HWY 73 TO +1.0	1	2	2WU	1.09	20-36	3	55	13,506.00		7,428	
TOTAL FOR MAP NO. 2									1.09		3	55	13,506.00		7,428
2026CPT.08.03.20772	Richmond	3	SR-1160 / INDIAN MOUND RD	FROM NC HWY 73 TO MONTGOMERY CO. LINE	1	2	2WU	0.5	18-21	3	60	5,262.00		2,894	
TOTAL FOR MAP NO. 3									0.5		3	60	5,262.00		2,894
2026CPT.08.03.20772	Richmond	4	SR-1153 / TEDDAR RD	FROM NC HWY 73 TO SR 1005 (EVERETT CHAPELL RD)	1	2	2WU	2.42	22	8	158	31,408.00		17,275	
TOTAL FOR MAP NO. 4									2.42		8	158	31,408.00		17,275
2026CPT.08.03.20772	Richmond	5	SR-1666 / ELLEN RD	FROM US HWY 1(N US 1 HWY) TO SR 1683 (ELLEN RD)	1	2	2WU	0.21	19	1	5	2,025.00		1,114	
TOTAL FOR MAP NO. 5									0.21		1	5	2,025.00		1,114
2026CPT.08.03.20772	Richmond	6	SR-1470 / CEDAR LANE RD	FROM SR 1465 (CEDAR LANE RD) TO MOORE CO. LINE	1	2	2WU	0.47	21			5,425.00		2,984	
TOTAL FOR MAP NO. 6									0.47				5,425.00		2,984
2026CPT.08.03.20772	Richmond	7	SR-1337 / LOWDERMILK RD	FROM SR 1321 (CAPEL MILL RD) TO END MAINTANCE	1	2	2WU	0.47	18	1	5	3,457.00		1,902	
TOTAL FOR MAP NO. 7									0.47		1	5	3,457.00		1,902
2026CPT.08.03.20772	Richmond	8	SR-1326 / DOC MCLEAN RD	FROM US HWY 220 TO END PVMT.	1	2	2WU	0.3	20			3,322.00		1,827	
TOTAL FOR MAP NO. 8									0.3				3,322.00		1,827
2026CPT.08.03.20772	Richmond	9	SR-1332 / TREECE RD	FROM SR 1317(CLAYTON CARRIKER RD) TO END PVMT.	1	2	2WU	0.79	18-24	1	13	9,372.00		5,155	
TOTAL FOR MAP NO. 9									0.79		1	13	9,372.00		5,155
2026CPT.08.03.20772	Richmond	10	SR-1339 / RICHARDSON RD	FROM SR 1307(BRUTON RD) TO END PVMT.	1	2	2WU	0.58	19	1	5	6,312.00		3,471	
TOTAL FOR MAP NO. 10									0.58		1	5	6,312.00		3,471
2026CPT.08.03.20772	Richmond	11	SR-1212 / STANBACK RD	FROM SR 1156 (FRUTCHEY RD) TO END PVMT.	1	2	2WU	0.2	20			2,236.00		1,230	
TOTAL FOR MAP NO. 11									0.2				2,236.00		1,230
2026CPT.08.03.20772	Richmond	12	SR-1915 / CHALK RD	FROM SR 1903 (MILL RD.) TO SR 1966 (AIRPORT RD)	1	2	2WU	1.09	22-36			17,542.00		9,648	
TOTAL FOR MAP NO. 12									1.09				17,542.00		9,648
2026CPT.08.03.20772	Richmond	13	SR-1168 / JACK CURRIE RD	FROM SR 1148 (GRASSY ISLAND RD) TO NC HWY 109	1	2	2WU	2.33	16-18	8	158	23,315.00		12,823	
TOTAL FOR MAP NO. 13									2.33		8	158	23,315.00		12,823
2026CPT.08.03.20772	Richmond	14	SR-1914 / FREEMAN MILL RD	FROM SR 1900 (BATTLE DAIRY RD.) TO SR 1915 (CHALK RD)	1	2	2WU	1.16	21-26		5	18,426.00		10,134	
TOTAL FOR MAP NO. 14									1.16			5	18,426.00		10,134
2026CPT.08.03.20772	Richmond	15	SR-1314 / MARVIN MCCASKILL RD	FROM SR 1309 (PAGE ST. EXT.) TO SR 1310 (BENNETT RD.)	1	2	2WU	3.88	16-18			37,669.00		20,718	
TOTAL FOR MAP NO. 15									3.88				37,669.00		20,718

PROJECT NO.	SHEET NO.	TOTAL NO.
2026CPT.08.03.20772	12	

SUMMARY OF QUANTITIES

PROJECT NO	COUNTY	MAP NO	ROUTE	DESCRIPTION	TYP NO	LANES	LANE TYPE	LENGTH	WIDTH	1575000000-E	1704000000-E	1803500000-E	1820000000-E	1838000000-E	1838500000-N				
										ASPHALT BINDER FOR PLANT MIX	PATCHING EXISTING PAVEMENT	ASPHALT SURFACE TREATMENT, DOUBLE SEAL	ASPHALT SURFACE TREATMENT, FOG SEAL	EMULSION FOR ASPHALT SURFACE TREATMENT	VACUUM TRUCK				
										MI	FT	TONS	TONS	SY	SY	GAL	WEEK		
2026CPT.08.03.20772	Richmond	16	SR-1117 / SMOKEY HOLLOW RD	FROM SR 1109 (ZION CHURCH RD.) TO SR 1118 (SMOKEY HOLLOW RD.)	2	2	2WU	0.79	21-22			9,984.00	998.00	6,689					
TOTAL FOR MAP NO. 16												9,984.00	998.00	6,689					
2026CPT.08.03.20772	Richmond	17	SR-2033 / PINECREST TRL	FROM SR 2031 (LAKE VIEW TRL.) TO SR 2039 (NORTH SHORE TRL)	2	2	2WU	0.25	21	1	5	6,154.00	6,154.00	1,899					
TOTAL FOR MAP NO. 17												6,154.00	6,154.00	1,899					
2026CPT.08.03.20772	Richmond	18	SR-2039 / NORTH SHORE TRL	FROM SR 2031 (LAKE VIEW TRL.) TO SR 2040 (PINE BARK TRL.)	2	2	2WU	0.15	20			1,899.00	1,899.00	1,272					
TOTAL FOR MAP NO. 18												1,899.00	1,899.00	1,272					
2026CPT.08.03.20772	Richmond	19	SR-2037 / CRESTWAY DR	FROM SR 1241 (SANDHILL RD.) TO D. E.	2	2	2WU	0.48	22-24			6,154.00	6,154.00	4,123					
TOTAL FOR MAP NO. 19												6,154.00	6,154.00	4,123					
2026CPT.08.03.20772	Richmond	20	SR-1138 / PINE LN	FROM SR 1005 (CARTLEDGE CREEK RD.) TO SR 1184 (OLD 74 HWY.)	2	2	2WU	0.25	19			2,733.00	2,733.00	1,831					
TOTAL FOR MAP NO. 20												2,733.00	2,733.00	1,831					
2026CPT.08.03.20772	Richmond	21	SR-1217 / INDUSTRIAL PARK DR	FROM SR 1124 (MIDWAY RD.) TO SR 1218 (INDUSTRIAL PARK DR.)	2	2	2WU	0.14	23-35	1	5	2,023.00	2,023.00	1,355					
TOTAL FOR MAP NO. 21												2,023.00	2,023.00	1,355					
2026CPT.08.03.20772	Richmond	22	SR-1218 / INDUSTRIAL PARK DR	FROM SR 1217 (INDUSTRIAL PARK DR.) TO SR 1218 (INDUSTRIAL PARK DR.)	2	2	2WU	0.12	22	1	5	1,830.00	1,830.00	1,226					
TOTAL FOR MAP NO. 22												1,830.00	1,830.00	1,226					
2026CPT.08.03.20772	Richmond	23	SR-1224 / PARROT LN	FROM SR 1200 (COUNTY CANYON DR.) TO D.E.	2	2	2WU	0.09	31			1,553.00	1,553.00	1,041					
TOTAL FOR MAP NO. 23												1,553.00	1,553.00	1,041					
2026CPT.08.03.20772	Richmond	24	SR-1338 / LONG ST	FROM US HWY 220 (N. US 220 HWY.) TO END MAINT.	2	2	2WU	0.11	19			1,127.00	1,127.00	755	*				
TOTAL FOR MAP NO. 24												1,127.00	1,127.00	755					
TOTAL FOR PROJ NO. 2026CPT.08.03.20772												18.26		30	501	218,662.00	24,471.00	122,054	12
GRAND TOTAL												18.26		30	501	218,662.00	24,471.00	122,054	12

PROJECT NO.	SHEET NO.	TOTAL NO.
2026CPT.08.03.20772	14	

THERMOPLASTIC AND PAINT QUANTITIES

PROJECT NO	COUNTY	MAP NO	ROUTE	DESCRIPTION	TYP NO	LANES	LANE TYPE	4413000000-E		4457000000-N		4815000000-E		4825000000-E		4830000000-E		4835000000-E		4840000000-N		4845000000-N				
								MI	FT	WORK ZONE ADVANCE/GENERAL WARNING SIGNING SF	TEMPORARY TRAFFIC CONTROL LS	6" WHITE PAINT LF	6" YELLOW PAINT LF	12" YELLOW PAINT LF	16" WHITE PAINT LF	24" WHITE PAINT LF	PAINT MSG SCHOOL EA	PAINT MSG RXR EA	PAINT LT ARROW EA	PAINT RT ARROW EA						
2026CPT.08.03.20772	Richmond	18	SR-2039 / NORTH SHORE TRL	FROM SR 2031 (LAKE VIEW TRL.) TO SR 2040 (PINE BARK TRL.)	2	2	2WU	0.15	20	17																
TOTAL FOR MAP NO. 18								0.15		17																
2026CPT.08.03.20772	Richmond	19	SR-2037 / CRESTWAY DR	FROM SR 1241 (SANDHILL RD.) TO D. E.	2	2	2WU	0.48	22-24	54																
TOTAL FOR MAP NO. 19								0.48		54																
2026CPT.08.03.20772	Richmond	20	SR-1138 / PINE LN	FROM SR 1005 (CARTLEDGE CREEK RD.) TO SR 1184 (OLD 74 HWY.)	2	2	2WU	0.25	19	28		4,630	4,600													
TOTAL FOR MAP NO. 20								0.25		28		4,630	4,600													
2026CPT.08.03.20772	Richmond	21	SR-1217 / INDUSTRIAL PARK DR	FROM SR 1124 (MIDWAY RD.) TO SR 1218 (INDUSTRIAL PARK DR.)	2	2	2WU	0.14	23-35	16		2,800	2,800													
TOTAL FOR MAP NO. 21								0.14		16		2,800	2,800													
2026CPT.08.03.20772	Richmond	22	SR-1218 / INDUSTRIAL PARK DR	FROM SR 1217 (INDUSTRIAL PARK DR.) TO SR 1218 (INDUSTRIAL PARK DR.)	2	2	2WU	0.12	22			2,520	2,520													
TOTAL FOR MAP NO. 22								0.12				2,520	2,520													
2026CPT.08.03.20772	Richmond	23	SR-1224 / PARROT LN	FROM SR 1200 (COUNTY CANYON DR.) TO D.E.	2	2	2WU	0.09	31	10																
TOTAL FOR MAP NO. 23								0.09		10																
2026CPT.08.03.20772	Richmond	24	SR-1338 / LONG ST	FROM US HWY 220 (N. US 220 HWY.) TO END MAINT.	2	2	2WU	0.11	19	12	*															
TOTAL FOR MAP NO. 24								0.11		12																
TOTAL FOR PROJ NO. 2026CPT.08.03.20772								18.26		2,014	1.000		310,248	262,896	275	188	283	12	4	11	2					
												573,144				16		13								
GRAND TOTAL								18.26		2,014	1.000		310,248	262,896	275	188	283	12	4	11	2					
												573,144				16		13								